

Off- Season Rain Guard Cultivation

ALIVE-FNS Project
Ayeyarwady Delta – Myanmar
A sustainable technique for the Delta farmers



1- Rain guard construction from 50 to 100 m² – Use PVC plastic for rain protection. Keep the side open and overlapping roof (gap) for ventilation and less moisture.

2- Nursery: It is important to start first in nursery then transplant for better plant growth. Start nursery in container or raised table off ground with good soil and under shelter in particular for Mustard family (Brassicaceae) and Lettuce family (Asteraceae).



3- Soil preparation, raised bed : Well prepared soil with fine texture and well composted is so important for excellent plant growth. Till the soil with spade, break down lumps, make raised bed 3 feet wide and 5 to 6 inches height. Compost with Super Bokashi at 1 kg/m² or about 50 to 100 kg Bokashi for 50 to 100 m² plot. Add rice husk ashes and mulch with rice straw.



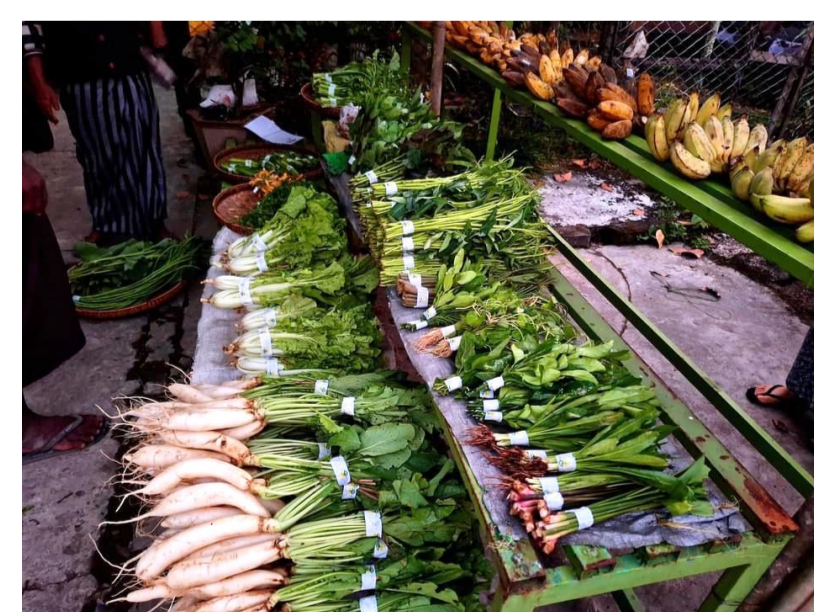
4- Transplanting and direct sowing: Transplant or direct sowing at proper spacing depending on vegetable – Use plant marker for Row to Row and respect spacing from Plant to Plant/ Seed to Seed for excellent growth. Direct sowing for the crops of Apiaceae family, radish and amaranth family (Amaranthaceae).



5- Bio input : Bio input application is one of the most important aspect. Spray twice a week bio- input. Add 1000 ml for IEM, 300 ml FFE and 600 ml for Natural pesticides, 120 ml for IEM 5 and FAA in 16 Liters sprayer capacity. IEM, FAA are for plant growth, FFE is for stimulating fruiting, IEM 5, Natural pesticides, Tobacco mixture are for pest control. Bordeaux mixture is used as basal for fungal disease. Super Bokashi is a fertilizer.



6- After care: Keep on spraying bio input for plant growth and P & D control, all over the growing cycle. Start the well in time in June and cultivate up to 3 to 4 crop cycles for best revenues.



7- Sale to neighbour, collector or Bogale market. Growth diversification of vegetable up to 10 for best nutrition benefit for women, children and the family. Use only bio input for SAFE FOOD.

Advantage Off- season cultivation under rain guard and Bio- input

Investment of about 1 L MMK (seed, plastic, bio- input, sprayer) – Profit from 2 to 3 to L MMK on 50-100 m² plot, depending on farmer experience and number of crops cycles grown. Bio input cost only 15 000 to 25 000 MMK for the full season. 6 hours to prepare all bio- input for the whole season- 15 minutes needed per treatment – Spray bio input twice a week. High diversification up to 10 vegetable, allow for better market access, family health and good sale price during monsoon. No Chemical Fertilizer or Pesticides, better looking vegetable, longer shelf life.