

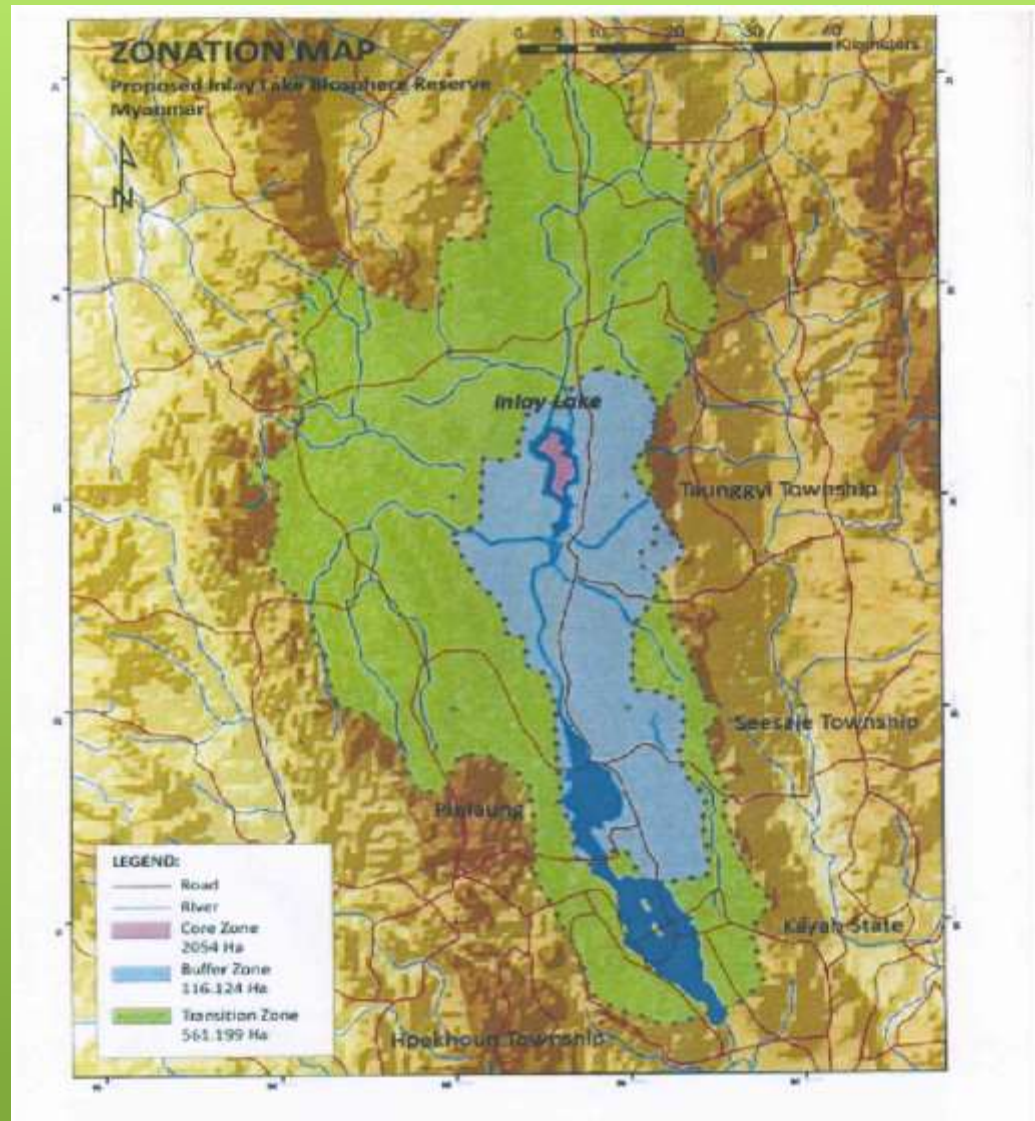
Sustainable Agricultural Practices of Farmers through Farmer Field School Approach

by

Heather Morris

"Doh Taung Thu"(LNGO)

Location of Inle Lake



Situation of Inle Lake

- Inle Lake is suffering from environmental degradation due to unsustainable practices in forestry, farming and fishing
- Lake waters are polluted by pesticide sprays and fertilizer applications on floating gardens
- Soil erosion on surrounding mountains are building up silt in the lake and water area is decreasing
- Fish and plant species are disappearing at a fast rate

Measures undertaken

- With the support from Norwegian government, UNDP worked together with implementing partners to restore the area and initiated the Inle Lake Conservation and Rehabilitation Project
- The Farmer Field School Approach was set up as an extension model to build capacity of local farmers

Objectives

- Conservation of the environment
- Improve the health of residents
- Produce safe and healthy agricultural products
- Develop an effective extension model

School without walls



Plants are the teachers



Regular extension message



Learning by doing



Seeing is believing



Bottom up approach



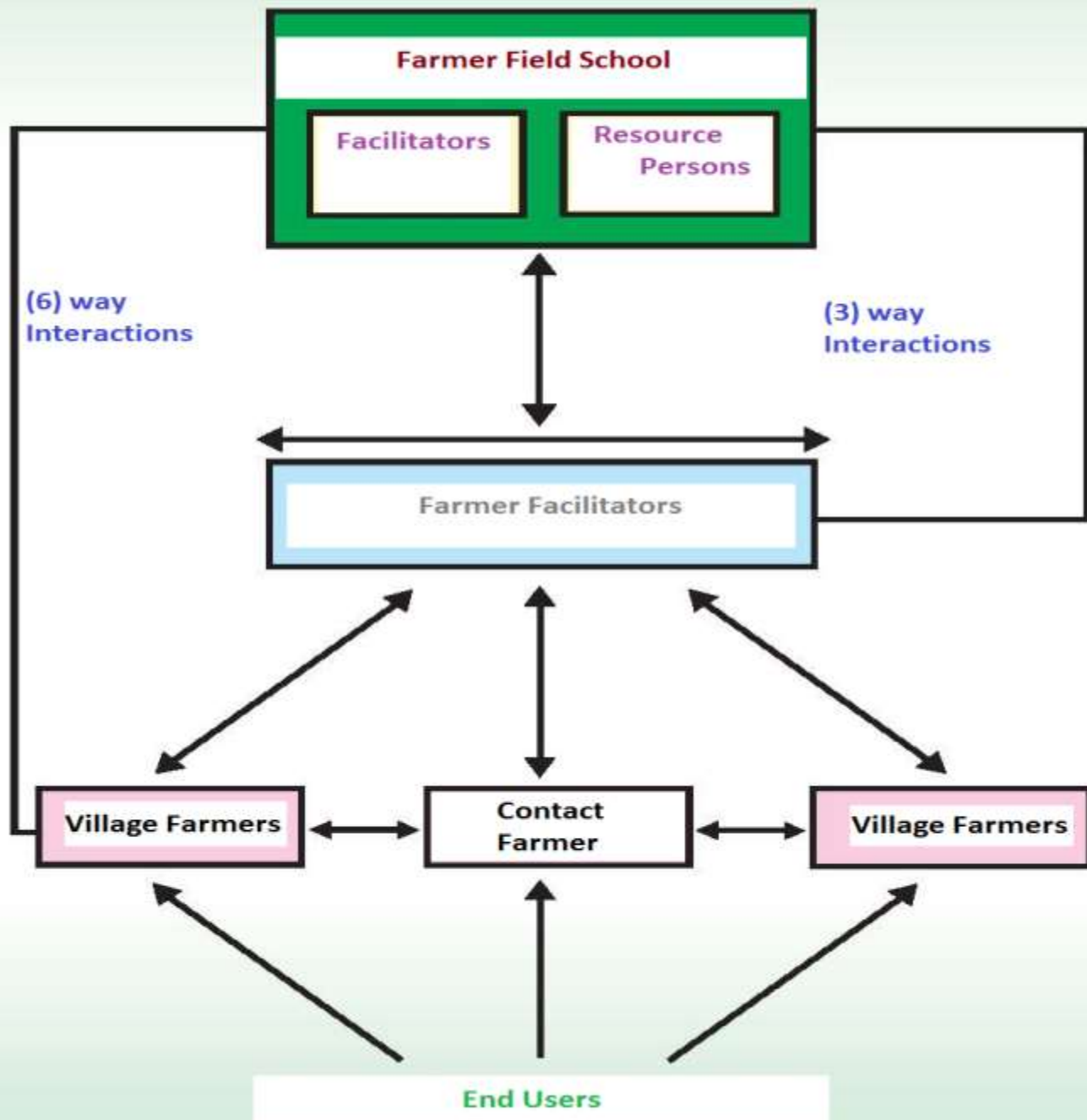
FFS is by the farmers



Trainers are facilitators



Technology Dissemination



Why Farmer Field Schools are successful?

Retention of Technology

-10% retention from reading



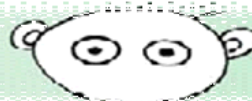
-20% retention from listening



-30% retention from seeing



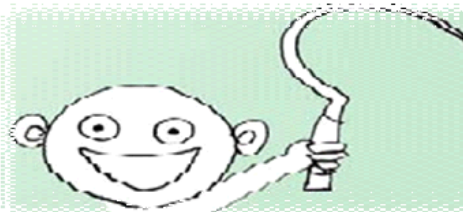
-50% retention from listening and seeing



-70% retention from listening reading and speaking



-90% retention from application of technology



Steps in setting up FFSs

- Select Facilitators
- Select FFS location
- Select farmer participants
- Conduct Training of Trainers/Concept Training
- Start regular school sessions
- Prepare educational handouts
- Conduct Field days
- Conduct exchange visits

Methods

Compost making



Water Hyacinth



Cutting by Hand



Water Hyacinth Shredder



Methods

➤ Mulching Tomato Plants



Methods

➤ Fermented Plant Juice (FPJ)



Fermented Fruit Juice (FFJ)



Fish Amino Acid (FAA)



Vermiculture



Vermiculture Concrete Tank



Methods

➤ Bordeaux mixture



Methods

- Seed selection
- Appropriate plant spacing
- Plant management (mulching, green manuring)
- Correct plant sowing time



❖ Results



Chemical free Niger



သဘာဝပန်းနှမ်းယှဉ်ပြိုင်ကွက်

တောင်သူ - ဒေါ်တင်အေး

စိုက်ရက် - ၂၇-၉-၂၀၁၂

အကွက်အရွယ်အစား - ၀.၂၅ ဧက

မြေဩဇာ - မထည့်

Chemical free Wheat



Chemical free Garlic

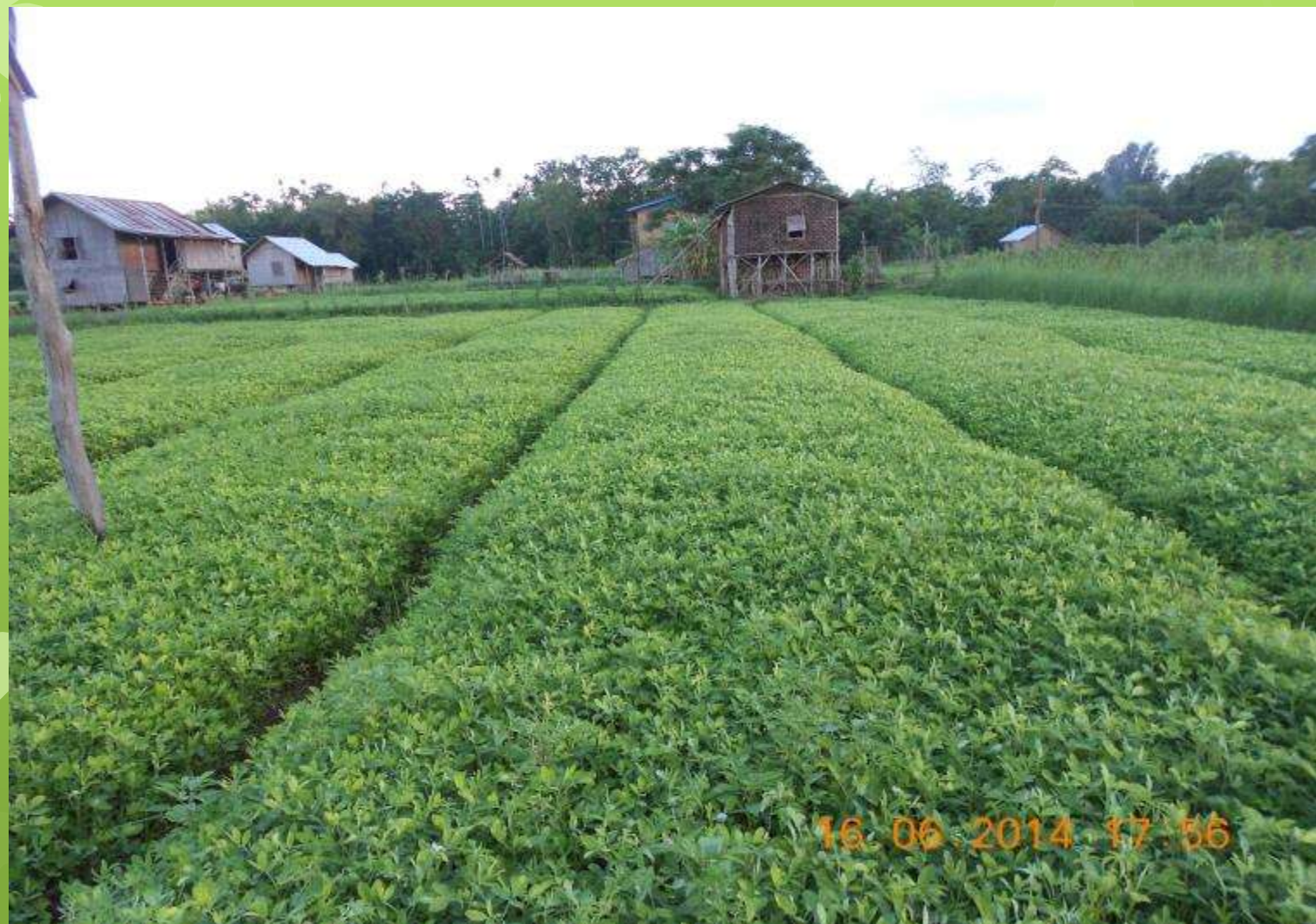


Chemical free Tomato



Chemical free agricultural crops

Sinpadaethar Groundnut



Chemical free Corn



Chemical free agricultural crops

French Beans



Paddy



Chemical free agricultural crops

Tomato



Egg plant



Market Linkages

- One female farmer has sold 400 lbs of unshelled chemical free groundnuts to organic sale center at Yangon and has sold 500 viss of organic groundnut oil to Yangon, Taungyi and Nyaung Shwe



Organic Fair



Exposure trip for farmers



Organic Certificates



Organic Farmer



Farmers from Shan State



FFS model can be used for many disciplines

- Climate change mitigation
- Food Security strategy
- Farmer Business schools
- Farmer Income generation
- HIV/AIDS awareness raising
- Integrated Pest Management

Thank you for your attention



08 07 2014 10:39

Organic Agriculture Practices

Safety Food, Healthy Life with **Our Earth.**